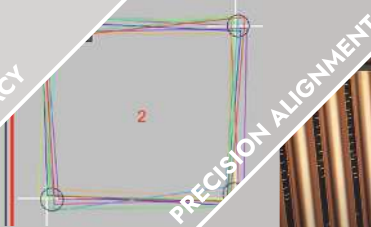


NANO ACCURACY



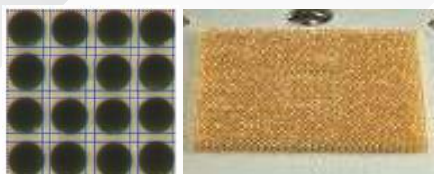
PRECISION ALIGNMENT



HIGH ASPECT RATIO

FIXTURE

- Hole Ø: from 20µm
- Wall Thickness: 10µm
- Hole Position: +/- 1.5µm
- CCD Control
- Depth-Routing
- Spray Cooling



Fixture Nano



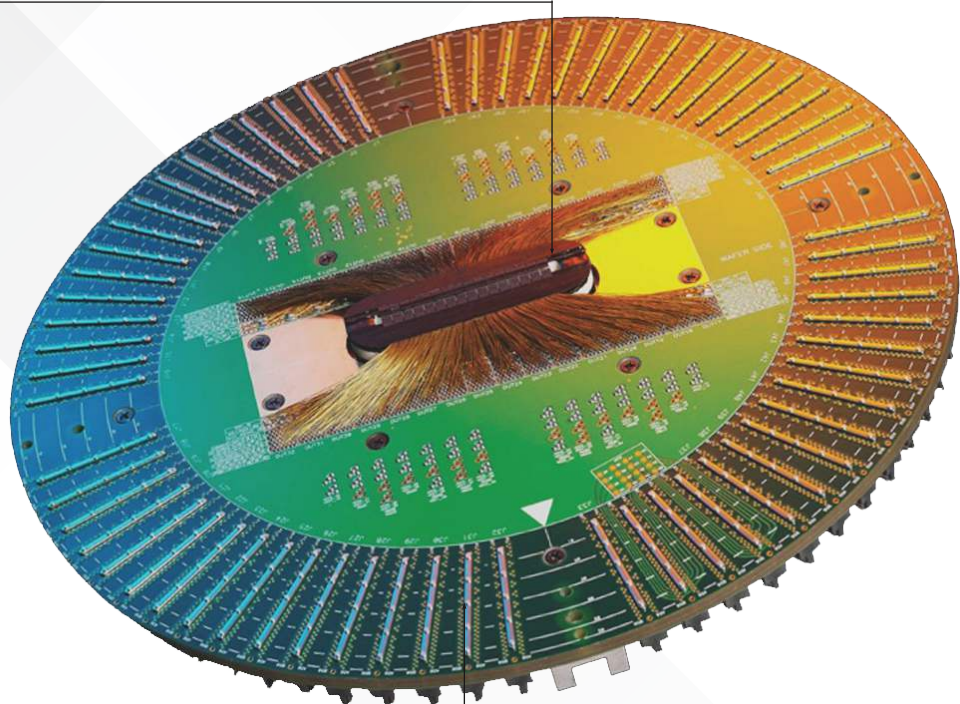
MXY-CCD-Drilling



Full Panel X-Ray

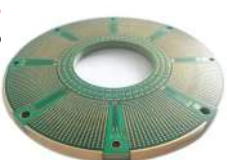


Post-Etch Punch



PCB

- High Aspect Ratio
- Layerspecific Compensation
- CCD Registration /DIC
- Flip Drill
- Peckdrill
- Pin-Lam Tooling



Fixture Nano, MXY-CCD, XRA3, Optiflex II

IC Probe Card Solutions



Fixture Drilling/Routing Models			
Model	Fixture Nano	Fixture 1	MX 1
Table Size	11.8" x 13.7"	11.8" x 13.7"	29" x 28"
Drilling/Routing	Hybrid	Drilling	Drilling
Process Hole Accuracy (10 x 10 mm)	+/- 1.5 µm	+/- 3 µm	+/- 5 µm
Min. Hole Diameter / Pitch	0.02 mm / 0.03 mm	0.03 mm / 0.06 mm	0.1 mm / 0.15 mm
Table Flatness	+/- 3 µm	+/- 8 µm	+/- 35 µm
Scale Resolution	5 nm	100 nm	1,000 nm
Climate Control	Yes	No	No
Controller	S80	S50	S50
Smart Factory I4.0	MES (Manufacturing Execution System) to be Customized		

PCB Drilling MXY-CCD Models			
Model	MX1	MXY2	MXY6
Drill Heads	1 Station	2 Station Individual Axis	6 Station Individual Axis
CCD Cameras	High Resolution CCD Camera per Station		
Special Features	Peckdrilling, Flipdrilling, Drill in Centre, Backdrilling		
Spindle Type	T160 (20-160k) / T200x (20-200k) Suitable for Heavy Copper		
Accuracy	+/-12µm Schmoll Standard Test (+/-15µm, Cpk>1.67)		

PCB X-Ray Models	
Model	XRA ³ Full Panel X-Ray Inspection, Registration and Drilling
Specifications	Please Refer to Our XRA ³ Brochure

PCB Fixed Tooling Innerlayer Punch	
Model	Optiflex II
Specifications	Please Refer to Our Optiflex II Brochure

Schmoll Maschinen HQ

Schmoll Maschinen (Germany)
 Odenwaldstraße 67
 D-63322 Rödermark/Ober-Roden
 Germany
 ☎ +49 60 74 89 01-0
 ✉ info@schmoll-maschinen.de
 🌐 www.schmoll-maschinen.de

Schmoll Asia Pacific

SAP Hong Kong (Head Office)
 ☎ +852-28505909
 ✉ sales@schmoll-asia.com
 🌐 www.schmoll-asia.com
 SAP Taiwan
 ☎ +886-3-3583808
 SAP Dongguan
 ☎ +86-769-22419199
 SAP Kunshan
 ☎ +86-512-57371850

SAP Korea
 ☎ +82-31-4978779
 SAP Thailand
 ☎ +66-2-711-7349-50
 SAP Japan (Head Office Osaka)
 ☎ +81-6-6531-2127
 SAP Malaysia
 ☎ +60 (0)4 588 7396



Schmoll-asia.com



Schmoll WeChat